



3D Visualization by: LUCID - The Artistry

RERA No.: PR/GJ/VADODARA/VADODARA/Others/CAA06698/A1C/110820  
W: www.gujrera.gujarat.gov.in

PROJECT BY



DEVELOPERS

**DEEPAK CONSTRUCTION**

Site : Wealth Square - Opp. Yash Complex,  
30 Mtr. Gotri Road, Gotri, Vadodara.

+91 63567 77877  
wealthsquare@vihav.com  
www.vihav.com

Architect :



Structure : Ashok Shah & Associate

SCAN THIS QR CODE  
FOR LOCATION



SHOWROOMS  
SHOPS & OFFICES



# BEST CHOICE FOR YOUR BUSINESS TO GROW

Location\* is a main mantra in real estate. Wealth square is a premium commercial complex which is located on the prime location of Gotri main Road, Vadodara. The benefit of location will add to the shopper's delight and convenience for professionals and office owners. While the stylish design and modern elevation, beautiful glass facade will add to the visual delight.

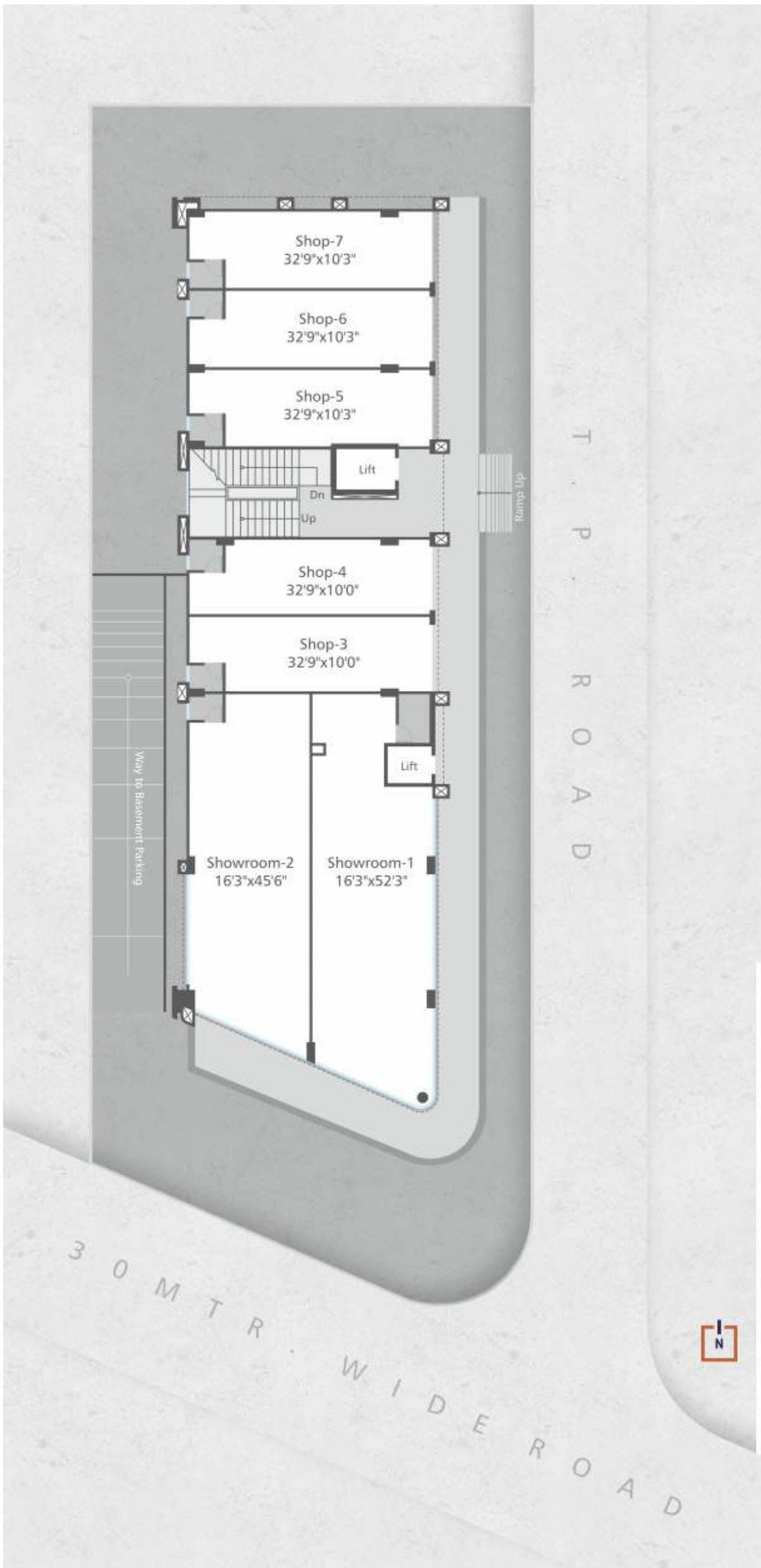




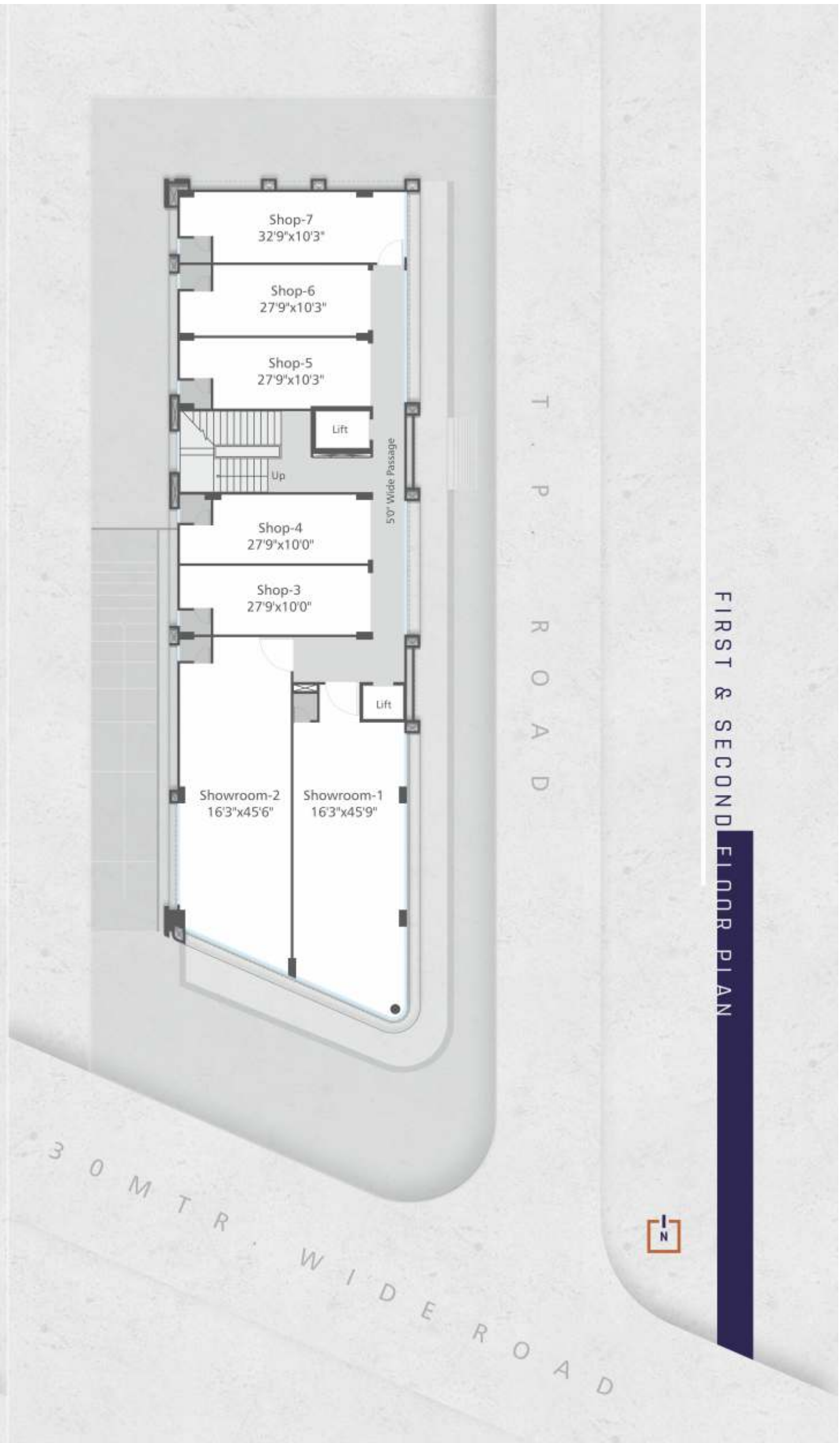
# ELEGANT ELEVATION



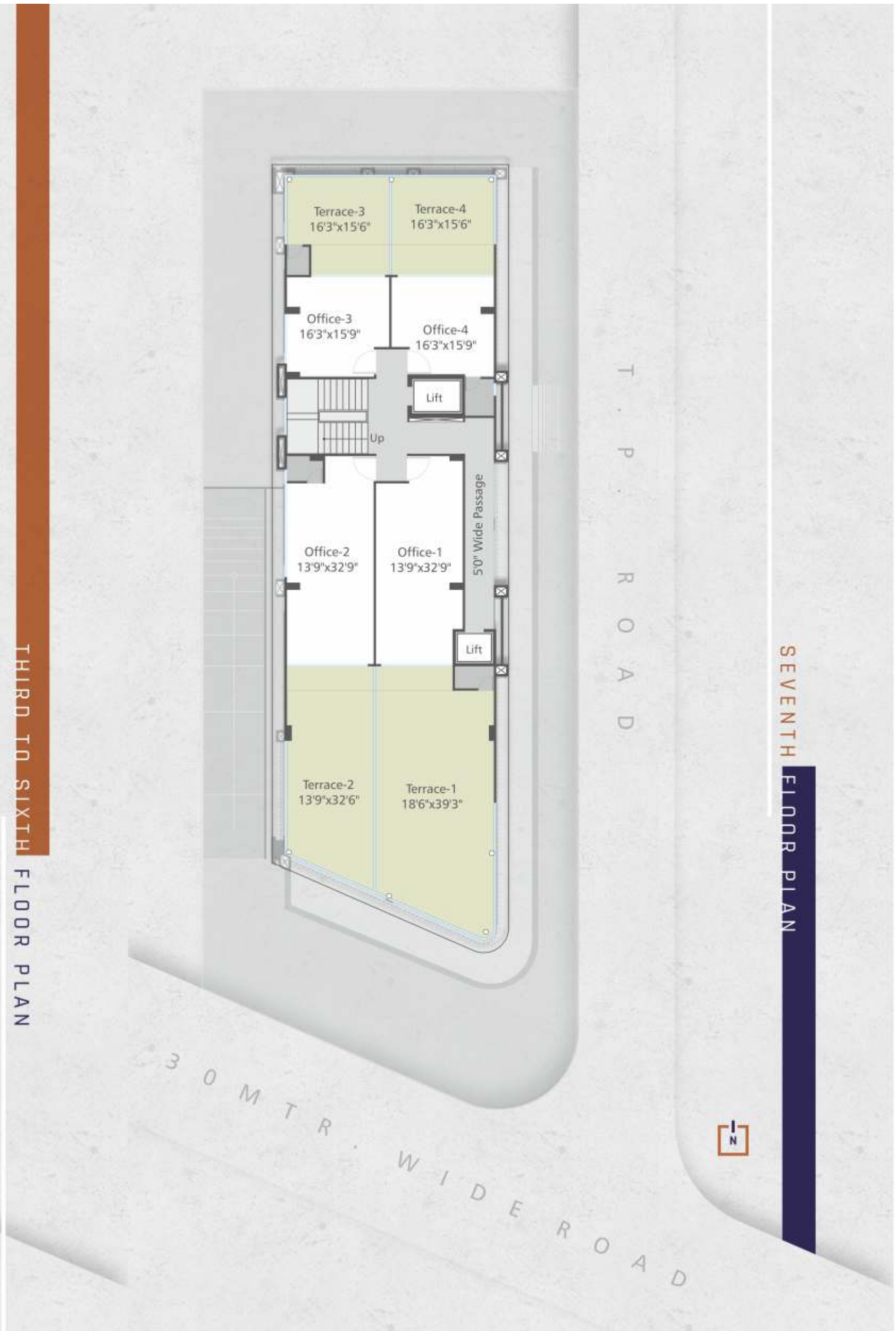
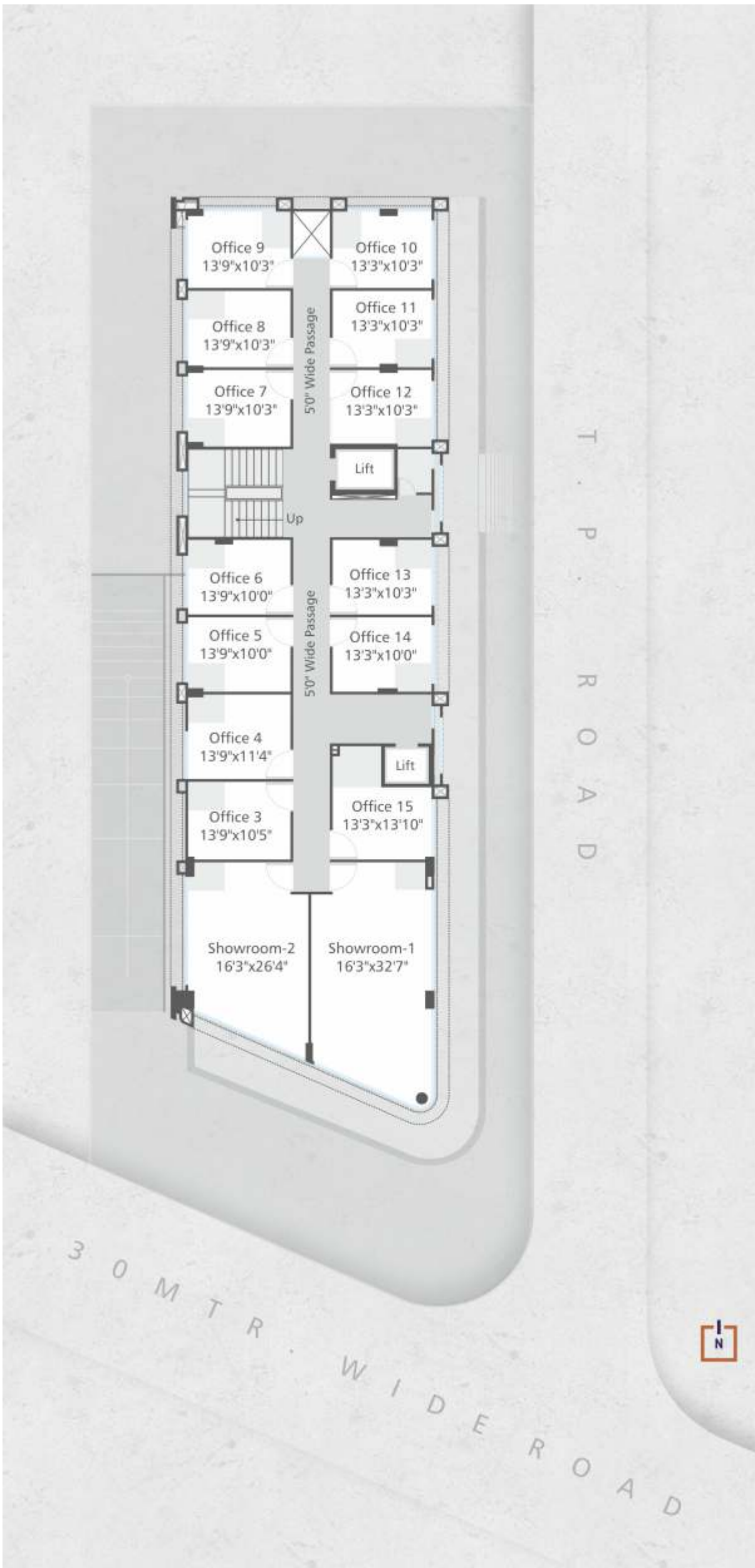




GROUND FLOOR PLAN



FIRST & SECOND FLOOR PLAN







## VALUE ADDITIONS



Ample parking facility on ground floor and mechanical parking system at basement



Security & surveillance through cctv



2nos. of highspeed elevator starting from basement with stretcher facility



Provision for washrooms in each unit



DG power backup for common utility



Separate provision for outdoor unit of ACs







**Terms & Conditions:** 1. The following will be charged extra in advance/ as per government norms: (a) Stamp Duty & Registration Charges, (b) GST (as actual) or any such additional government taxes if applicable in future, (c) Maintenance Deposit, (d) Development charges and Estimate for New Electric Meter & Connection. 2. If any new tax applicable by Central or State Government in future, it will be born by the buyers/ members. 3. Possession will be given only after one month of settlement of all accounts. 4. Continuous default in payments leads to cancellation. 10% Administrative charges will be deducted for any cancellation after one month of booking, and balance amount will be refunded back only after booking of the unit by new member. 5. The developers reserve all the rights to change the plan, elevation, specification or any details will be binding to all. 6. Changes in any structural design & changes in any external facade will NOT be permitted under any circumstances. 7. Internal changes will only be permitted with prior permission. 8. Outdoor AC units will be fitted as per provision provided in the designated place by the architect. 9. Any balance FSI at present or in future shall be availed by the developer and no member would claim any right for the same. (10) Any plans, specification or information in this brochure can not be part of an offer, contract or agreement. (11) This Brochure does not contain any legal Part as per rera.



LOCATION